

# Xtenda-Leg™ Replacement Foot

Item **604**

**RUBBER FEET**

Rubber Feet, Hold Down & Lock Caps, & 6-screws

Kit Includes: 2 each



7 26097 00604 5



# Xtenda-Leg™ Replacement Foot

Item **704**

**CLEATED FEET**

Cleated Feet, Hold Down & Lock Caps, & 6-screws

Kit Includes: 2 each

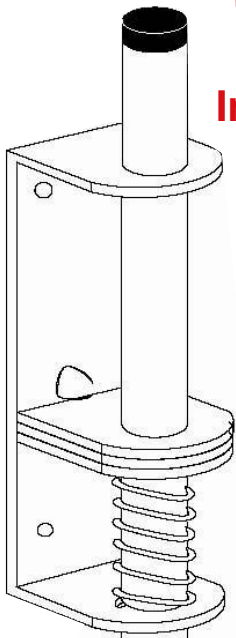


7 26097 00704 2



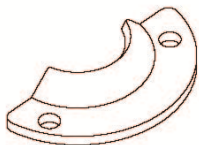
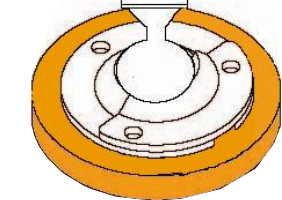
**WARNING** NEVER REPAIR A WORN OR BROKEN LEVELER.  
ALWAYS REPLACE BOTH FEET AT SAME TIME.

## Instructions Leveler with Single Piece OLD STYLE Hold-Down Caps

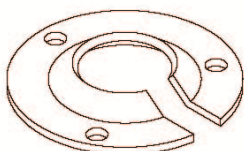


- 1: Remove the black tube cap and screw from the top of the tube.
- 2: Squeeze locking plates towards the springs and slide the bracket to remove the tube. CAUTION: The spring tension can cause the locking plates to release quickly.
- 3: Remove the 3 screws on the Foot.  
Slide the old style Hold-Down Cap over the tube.
- 4: Re-assemble leveler in reverse order.
- 5: You will install new foot starting with step 4 below.

## Instructions for New Style Levelers with Two Piece Slotted Hold-Down Caps



Half Cap



Slotted Cap

- 1: Remove screws from the two piece Hold-Down Cap
- 2: Remove the Half Cap then lift the Slotted Cap sliding off the narrow part of Swivel Ball.
- 3: Install the new Slotted Cap by sliding it onto the narrow part of the Swivel Ball.
- 4: Lay Half Cap on top of Slotted Cap where holes align
- 5: Install (3) three screws but DO NOT FULLY TIGHTEN until last screw is in place.
- 6: Fully tighten the (2) half cap screws first and then the rear screw.



# CE Tooling, LDA-Paint Shields Div

2560 W. Brooks Ave. N. Las Vegas, NV 89032 [www.PaintSprayShields.com](http://www.PaintSprayShields.com)

## Flexible & Stiff, Plastic & Aluminum

Provide protection and reduce splatter when painting or finishing. Shields are light weight and are easy to clean. Available with rigid 18" handle allowing fast and accurate positioning with reduced fatigue, or an adjustable handle which accepts standard screw in extension poles.

**ALUMINUM  
STRAIGHT  
STIFF**

**Combo Dry  
wall MUD  
SCRAPER  
Paint Shield**

**Wide Variety of  
Shields from  
12" to 48"  
in Length**

**PLASTIC  
STRAIGHT**

**Kraft  
Shield  
Holder**

**ALUMINUM  
STRAIGHT  
FLEX**

**Angled Leading Edge Stiff**

**Paint  
Mixer**

[www.PaintSprayShields.com](http://www.PaintSprayShields.com)  
[sale@PaintSprayShields.com](mailto:sale@PaintSprayShields.com)

☎ 702 736-2958 x.4 Fax 888 355-5711