

# LADDER LEVELERS LLC.



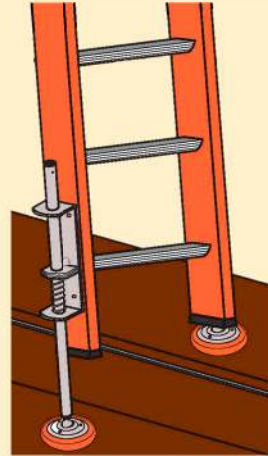
## Essential for working safely on uneven surfaces.

Adjust the level of a ladder in seconds! Simply push down on lock plates, level the ladder, then release.

Feet pivot 360° X 45°

Model #600 kraton rubber feet, superior grip.

Model #700 metal cleated feet for greater safety on penetrable surfaces such as grass, gravel, asphalt, mud, snow & ice.



**Xtenda-Leg® built to meet OSHA safety standard ANSI 14.8-2013**

*Consumer Reports Wrote "Tested the strength of the Xtenda-Leg at its maximum and most precarious extensions. With 800 pounds aboard a Type III ladder, the tubular legs bent slightly but didn't break."*

Installed On **Metallic brand Window washer STACK LADDERS**



As Stack Ladder legs are 1" thick, requires optional Bolt Kit. **Part# 802**



**#600 Rubber Feet**  
Special formula of "Kraton" rubber for superior grip!  
UPC 726097006007 8.1lbs.

Replacement Feet  
**604** UPC 726097006045



**#700 Cleated Feet**  
For penetrable Surface: grass, gravel asphalt, snow, ice, etc..  
UPC: 726097007004 6.35lbs.

Replacement Feet  
**704** UPC 726097007047

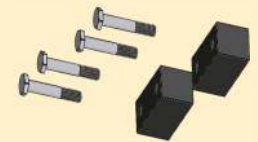
**#804 Hardware Kit**  
2 each Half & Slotted Caps



**#500 LADDER CAPS**  
Helps stabilize your ladder while protecting support surfaces. Made of a pliable rubber that expands to fit most ladder rail up to 3-3/16 X 1-3/16".



**NEW Part# 806 Bracket STAND OFFS**



[sales@LadderLevelers.com](mailto:sales@LadderLevelers.com)  
2560 W. Brooks Ave. N.Las Vegas, NV 89032

**Allows Feet to extend up past original feet of Ladders Manufacturer** 4 Blocks, 8 Extra Long Screws



# Paint Shield Holder

## PAINT SHEILD HOLDER Pole Handle with 1 second Quick Angle Adjust

Place disposable cardboard or plastic in holder for Paint Shield for spray or brush use.

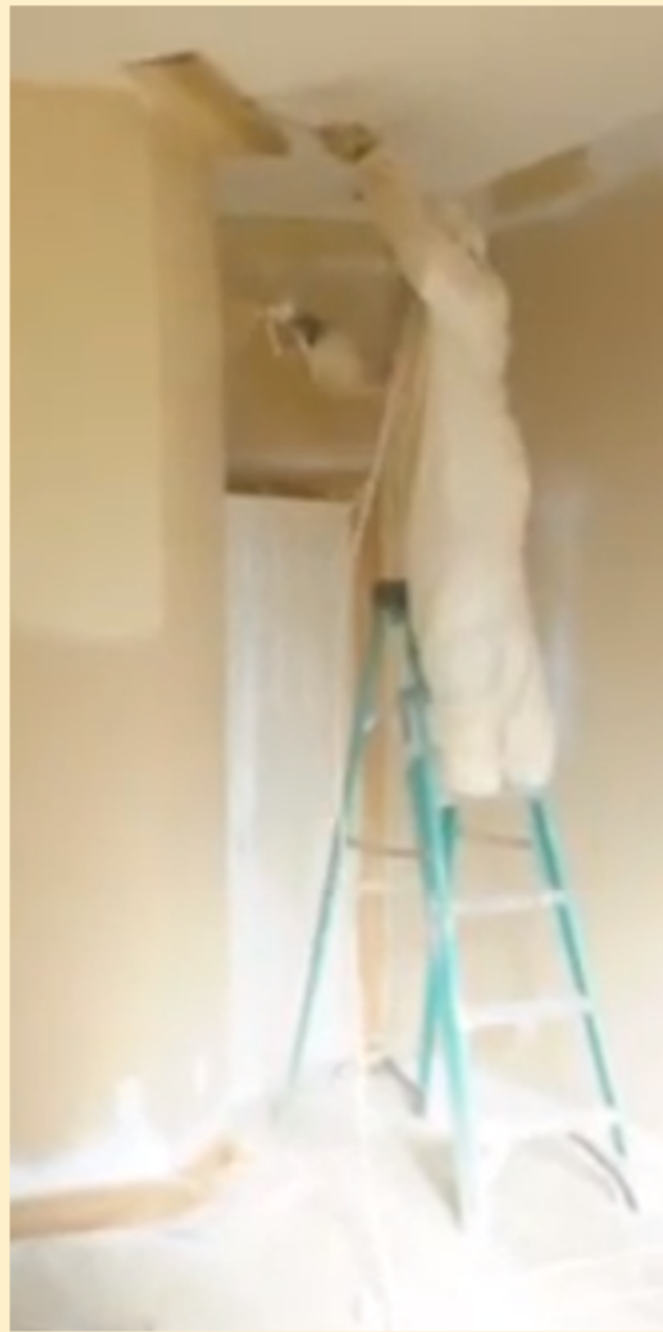
*Save time as you eliminate the need for taping areas you don't want to paint and little clean up as you toss cardboard when job is done. Shield not in a comfortable position, change shield angle with just a push or pull of shield through our exclusive ratchet angle adjustment. Tool accepts painters pole for extended reach.*



**#750-740-# Paint Shield Holder**

UPC: 726096007500





Below is a maintenance suggestions to keep your **Xtenda-Leg®** functioning and safe.

**Inspection check.** Assure proper installation of **Xtenda-Leg®**

The Black metal bracket is installed with washers between it and ladder leg to assure bracket is straight (no flexing over ladder rung) and stays flat. Keep clean and dry. No oils or lubricants on pole or lock plates

**Maintenance for Xtenda-Leg®** Shafts where ZINC coating has worn off.

Take course sand paper (80grit works great) hold on shaft and rotated around the shaft.

This cleans off any buildup of lubricants, soaps, or oxides from shaft and leaves small ridges for the lock plates to bite into.

**Watch Video.**

<https://www.youtube.com/watch?v=uxrbze9skuc&feature=youtu.b>

**Why does Zinc wear off.** Heavy use, exposure to weather or corrosive chemicals (paint thinners, turpentine, WD40).



**Periodic Maintenance for FOOT RETENTION TO SHAFT:**

Occasionally check that screws are firm. **Do not over tighten!**

If found that the screws will not stay tightened, the hole in sheet metal plate of foot has become oversized.

**Solution:** Bruise threads of screw. Set screws on hard surface, use hammer and tap on threads (also chisel or screw driver could be used.) *To keep screw from bouncing off hard surface, lay screw in paper or cloth towel to captivate.*

Also for rubber feet that start out using #8 sheet metal screw, you can change up to #10 screw.

(#10-32 screw is standard for steel cleated feet, #8-32 standard for rubber feet.)



**Essential for  
working safely  
on uneven surfaces.**

**Watch Video** Xtenda Leg, Ladder  
Leveler IN USE

[https://  
www.youtube.com/  
watch?v=SUIHPAuqH5U](https://www.youtube.com/watch?v=SUIHPAuqH5U)

